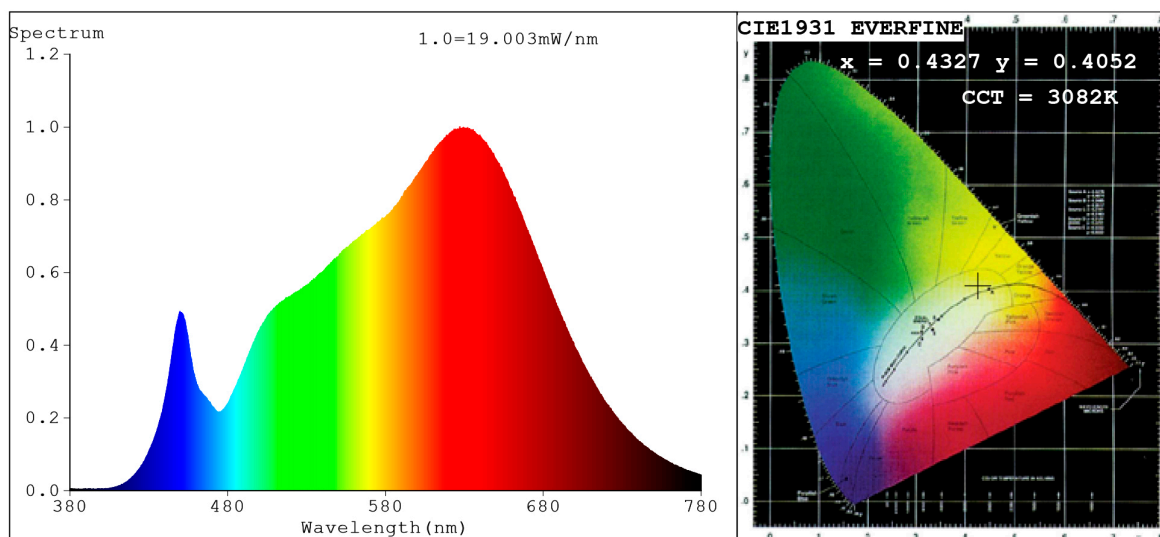


Spectrum Test Report



Color Parameters:

Chromaticity Coordinate: $x=0.4327$ $y=0.4052$ / $u'=0.2474$ $v'=0.5212$
 CCT=3082K (Duv=0.0010) Dominant WL:Ld =582.1nm Purity=51.5%
 Ratio:R=24.1% G=72.8% B=3.1%; Peak WL:Lp=627.1nm FWHM=180.2nm
 Render Index:Ra=96.7 CRI=94.9 TM30:Rf=95 Rg=100 Lav=604.0nm
 R1 =97 R2 =98 R3 =97 R4 =98 R5 =97 R6 =97 R7 =97
 R8 =92 R9 =80 R10=94 R11=98 R12=88 R13=97 R14=98 R15=95

Photo Parameters:

Flux = 945.4 lm Eff. : 91.36 lm/W Fe = 3.437 W Scotopic:1395.2 S/P:1.4757

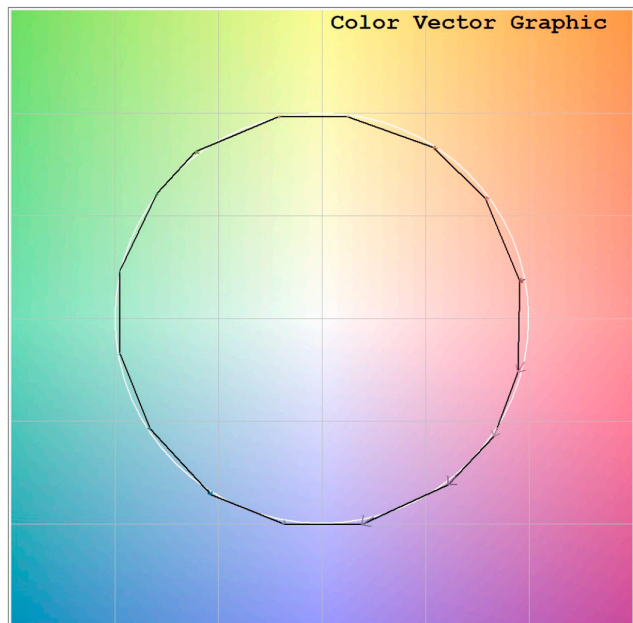
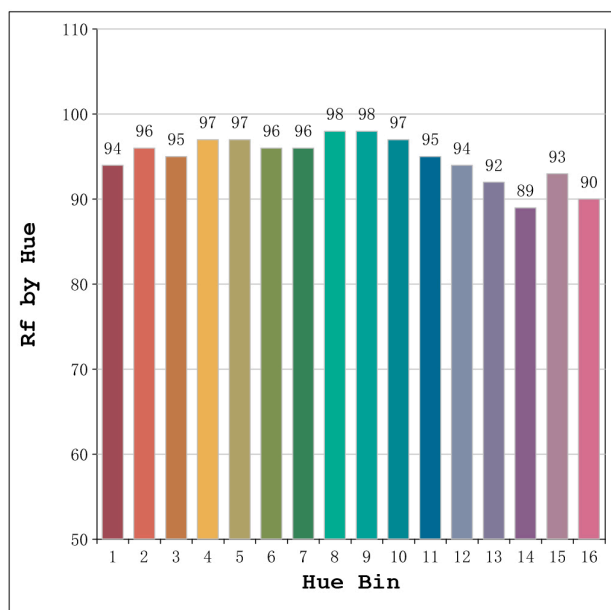
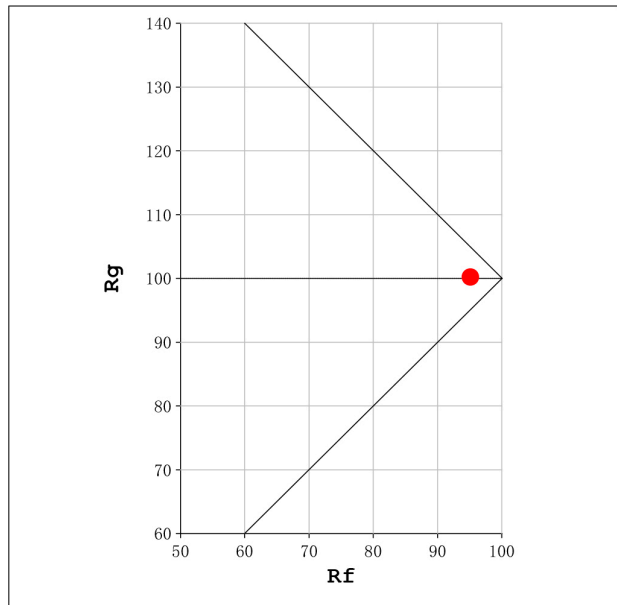
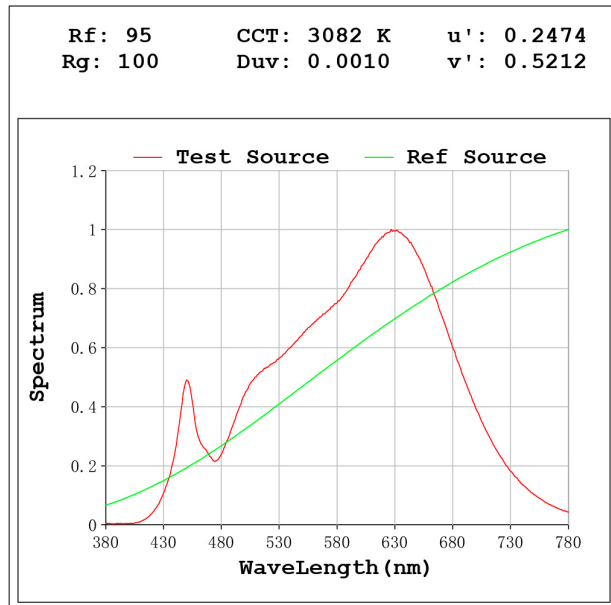
Electrical parameters:

V = 11.998 V I = 0.8625 A P = 10.35 W PF = 1.000

Status: Integral T = 1205 ms Ip = 38430 (59%)

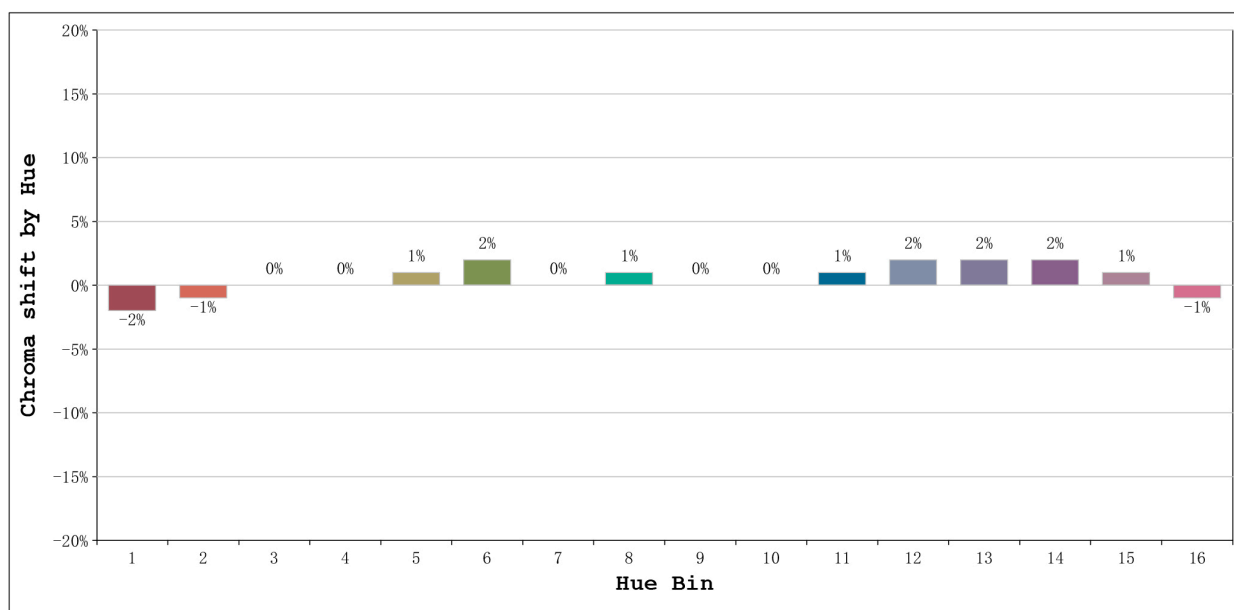
Model:Ecoled Avila pro 3000K
 Tester:Sergio Carneros
 Temperature:25Deg
 Manufacturer:Luz Negra.S.L

Number: 32.077
 Date:26-5-2021
 Humidity:57%
 Remarks:100cm Tira flexible



Model:Ecoled Avila pro 3000K
 Tester:Sergio Carneros
 Temperature:25Deg
 Manufacturer:Luz Negra.S.L

Number: 32.077
 Date:26-5-2021
 Humidity:57%
 Remarks:100cm Tira flexible



Hue Bin	Hue Angle	Rf	Graphic shift(%)	
			Chroma	Hue
1	0.0° - 22.5°	94	-2	0
2	22.5° - 45.0°	96	-1	1
3	45.0° - 67.5°	95	0	2
4	67.5° - 90.0°	97	0	0
5	90.0° - 112.5°	97	1	1
6	112.5° - 135.0°	96	2	1
7	135.0° - 157.5°	96	0	-1
8	157.5° - 180.0°	98	1	0
9	180.0° - 202.5°	98	0	0
10	202.5° - 225.0°	97	0	1
11	225.0° - 247.5°	95	1	2
12	247.5° - 270.0°	94	2	0
13	270.0° - 292.5°	92	2	-5
14	292.5° - 315.0°	89	2	-5
15	315.0° - 337.5°	93	1	-3
16	337.5° - 360.0°	90	-1	-4

Model:Ecoled Avila pro 3000K
 Tester:Sergio Carneros
 Temperature:25Deg
 Manufacturer:Luz Negra.S.L

Number: 32.077
 Date:26-5-2021
 Humidity:57%
 Remarks:100cm Tira flexible